

MS-700^{Q&As}

Managing Microsoft Teams

Pass Microsoft MS-700 Exam with 100% Guarantee

Free Download Real Questions & Answers **PDF** and **VCE** file from:

<https://www.leads4pass.com/ms-700.html>

100% Passing Guarantee
100% Money Back Assurance

Following Questions and Answers are all new published by Microsoft
Official Exam Center

- ⚙️ **Instant Download** After Purchase
- ⚙️ **100% Money Back** Guarantee
- ⚙️ **365 Days** Free Update
- ⚙️ **800,000+** Satisfied Customers



QUESTION 1

You have a Microsoft 365 subscription that uses Microsoft Teams. All users are assigned a Microsoft Office 365 Enterprise E3 license.

You need to ensure that the users can join scheduled meetings by dialing a toll-free phone number.

Which two add-on licenses should you assign to the users? Each correct answer presents part of the solution.

Each correct selection is worth one point.

- A. Communication Credits
- B. Microsoft 365 Audio Conferencing
- C. Microsoft 365 Domestic Calling Plan
- D. Microsoft Teams Phone Standard - Virtual User
- E. Common Area Phone

Correct Answer: AB

Communication Credits:

Communication Credits are used for paying toll-free and premium call charges associated with Audio Conferencing in Microsoft Teams.

Microsoft 365 Audio Conferencing:

Microsoft 365 Audio Conferencing allows users to dial in to Teams meetings using a phone, and it includes toll-free numbers.

Microsoft Teams Domestic Calling Plan is not directly related to toll-free numbers. Calling Plans are typically associated with providing domestic calling capabilities, but toll-free numbers usually require Communication Credits or Audio

Conferencing licenses.

QUESTION 2

HOTSPOT

You have a Microsoft Teams Phone deployment.

You have a dial plan that contains the following normalization rule:

1.

Pattern: `^8?(\d{7})$`

2.

Translation: +1330\$1

How will the phone numbers be normalized? To answer, select the appropriate options in the answer area.

NOTE: Each correct selection is worth one point.

Hot Area:

5551212:

+1330
+13305551212
+133085551212
5551212
85551212

85551212:

+1330
+13305551212
+133085551212
5551212
85551212

Correct Answer:

5551212:

+1330
+13305551212
+133085551212
5551212
85551212

85551212:

+1330
+13305551212
+133085551212
5551212
85551212

QUESTION 3

You work as a Systems Administrator for your company. The company has a subscription to Microsoft 365.

All users in your company have a Microsoft 365 E5 license.

A user named User1 has the Microsoft Teams desktop client on his Windows 10 client computer.

User1 reports several problems when using Microsoft Teams.

You need to view the debug logs on User1 TMs computer.

Which of the following actions should you perform to generate the debug logs?

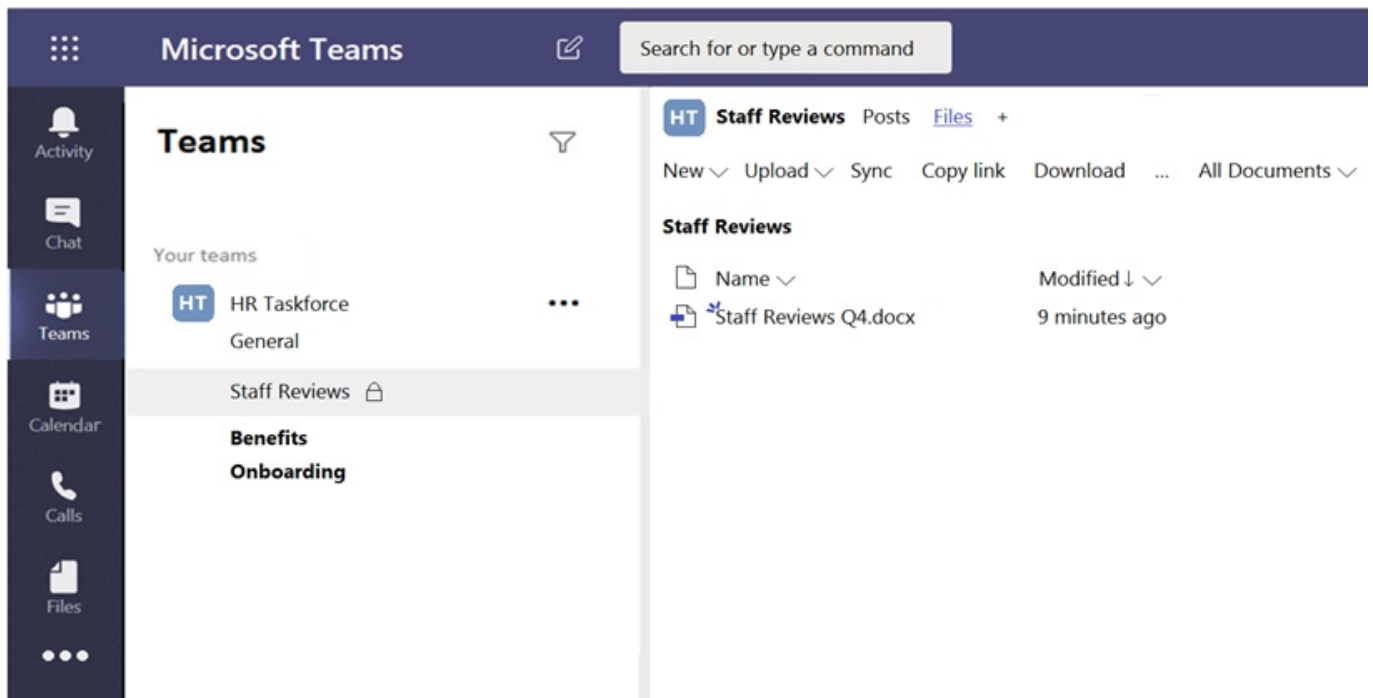
- A. Press the following key combination:Ctrl+Alt+Shift+1
- B. Right click on the Teams icon and select Get Logs
- C. Use Windows Event Viewer and browse to the Application Log.
- D. Run a Usage report in the Teams admin center.

Correct Answer: A

QUESTION 4

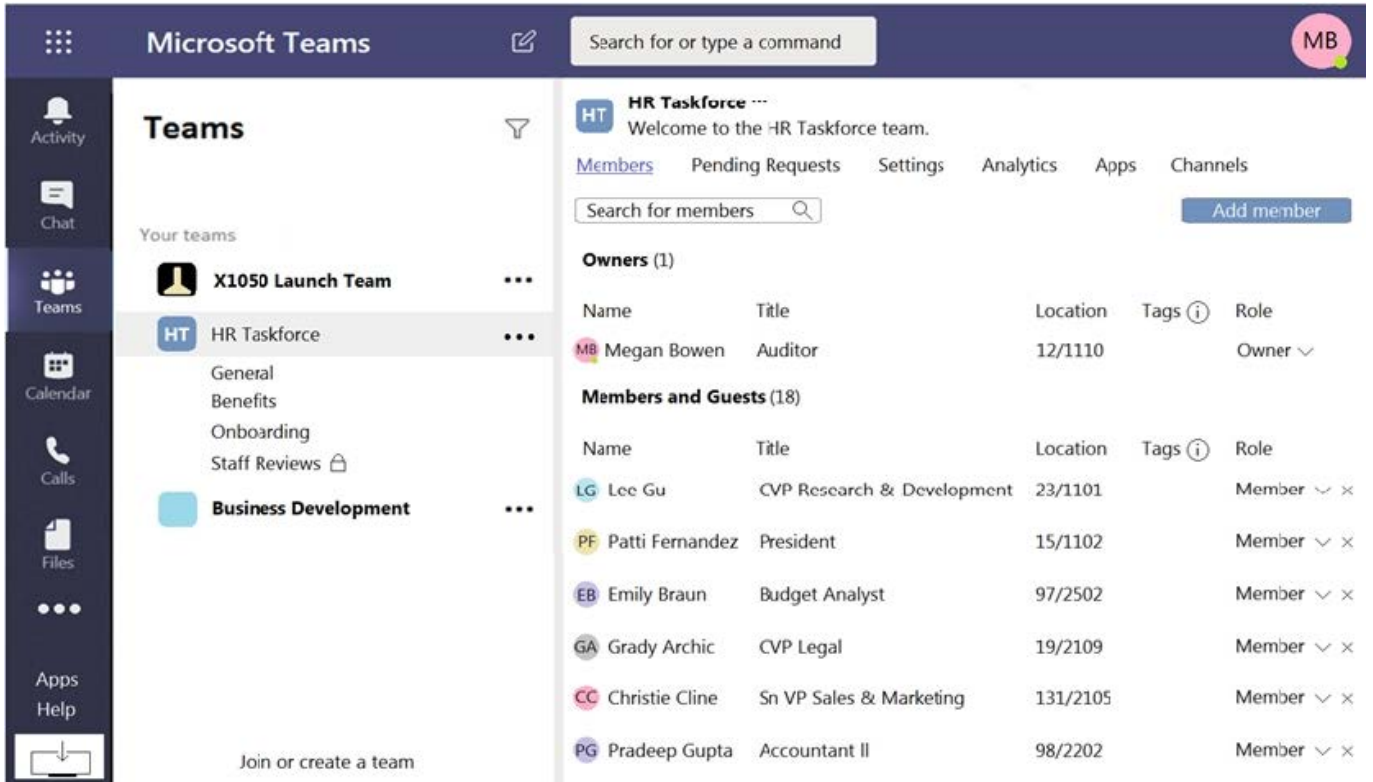
HOTSPOT

Your company has a Microsoft Teams deployment that contains a team named HR Taskforce. The members of HR Taskforce are shown in the HR Taskforce exhibit.

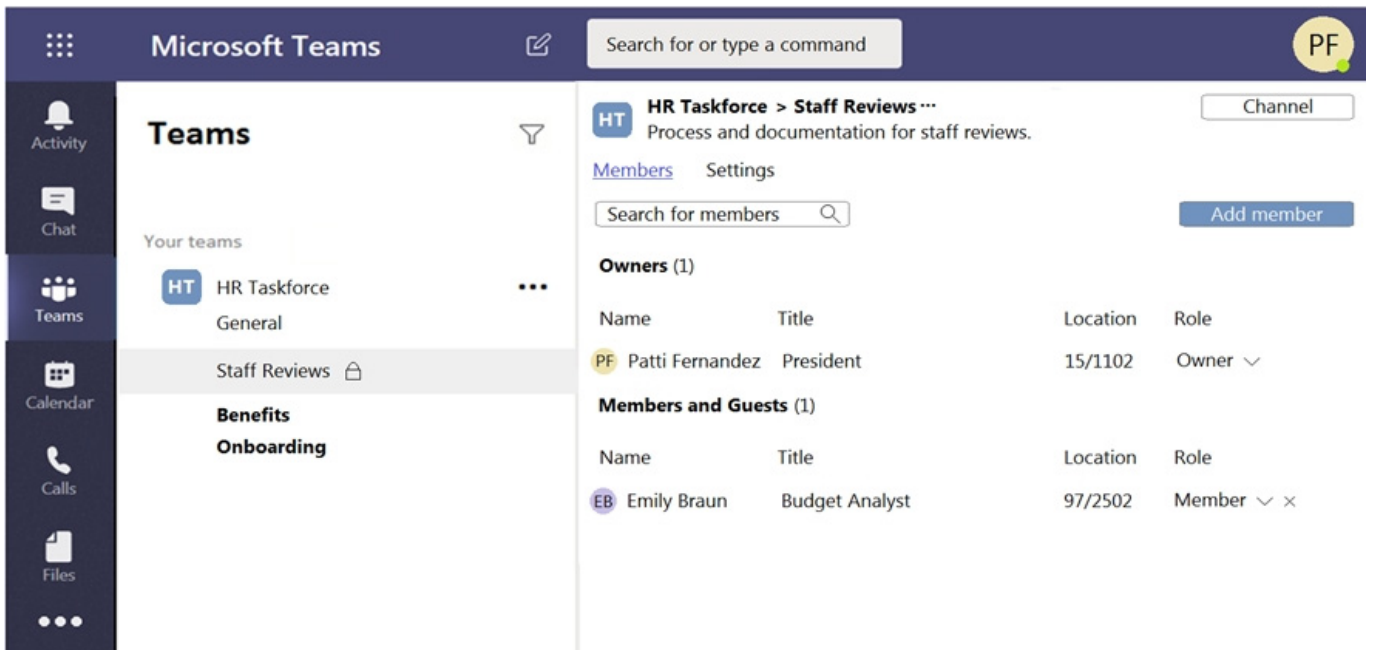


The screenshot displays the Microsoft Teams interface. On the left, the navigation pane shows 'Activity', 'Chat', 'Teams', 'Calendar', 'Calls', and 'Files'. The main area is titled 'Teams' and shows 'Your teams' with 'HR Taskforce' selected. Under 'HR Taskforce', there are channels: 'General' and 'Staff Reviews'. The 'Staff Reviews' channel is highlighted, and its details are shown on the right. The channel name is 'HT Staff Reviews' with options for 'Posts', 'Files', and '+'. Below the channel name, there are actions: 'New', 'Upload', 'Sync', 'Copy link', 'Download', and 'All Documents'. A file named 'Staff Reviews Q4.docx' is listed with a 'Modified' time of '9 minutes ago'.

The members of a private channel named Staff Reviews are shown in the Members exhibit.



The files in the Staff Reviews channel are shown in the Files exhibit.



For each of the following statements, select Yes if the statement is true. Otherwise, select No.

NOTE: Each correct selection is worth one point

Hot Area:

Answer Area

Statements

Yes

No

A user named Megan Bowen can view the name, description, and owner of the Staff Reviews channel.

A user named Megan Bowen can open the Staff Reviews Q4.docx file.

A user named Megan Bowen can add new members to the Staff Reviews channel.

Correct Answer:

Answer Area

Statements

Yes

No

A user named Megan Bowen can view the name, description, and owner of the Staff Reviews channel.

A user named Megan Bowen can open the Staff Reviews Q4.docx file.

A user named Megan Bowen can add new members to the Staff Reviews channel.

Reference: <https://docs.microsoft.com/en-us/microsoftteams/private-channels>

QUESTION 5

You have a Microsoft Office 365 subscription.

You discover that apps from a third-party publisher have security issues.

You need to block all apps from the publisher.

What should you use in the Microsoft Teams admin center?

- A. Org-wide app settings
- B. Policy packages
- C. Permission policies
- D. Manage apps

Correct Answer: D

Reference: <https://docs.microsoft.com/en-us/microsoftteams/manage-apps>

QUESTION 6

You work as a Microsoft 365 Administrator for your company. All users have Microsoft 365 licenses.

Users frequently collaborate by using private chats in Microsoft Teams.

You need to ensure that a single user is unable to permanently delete private chats.

Which of the following should you configure?

- A. The user TMs Microsoft 365 license options in the Microsoft 365 Admin Center.
- B. A meeting policy in Microsoft Teams.
- C. A litigation hold on the user TMs mailbox.
- D. A Sensitivity Label in the Security and Compliance Admin Center.

Correct Answer: C

QUESTION 7

HOTSPOT

You have a Microsoft 365 tenant that uses Microsoft Skype for Business on-premises. You plan to upgrade to Microsoft Teams in stages based on groups. The features required by each group are shown in the following table.

Group name	Feature
Sales	Calling, channels, groups, chat, and meetings in Microsoft Teams
Human Resources	Chat and calling in Skype for Business Meetings, channels, and groups in Microsoft Teams
Research	Chat and meetings in Skype for Business Channels and groups in Microsoft Teams

How should you configure the upgrade policy for the groups? To answer, select the appropriate options in the answer area.

Hot Area:

Sales:

Skype for Business only
Skype for Business with Teams Collaboration
Skype for Business with Teams Collaboration and Meetings
Teams only

Human Resources:

Skype for Business only
Skype for Business with Teams Collaboration
Skype for Business with Teams Collaboration and Meetings
Teams only

Research:

Skype for Business only
Skype for Business with Teams Collaboration
Skype for Business with Teams Collaboration and Meetings
Teams only

Correct Answer:

Sales:

▼
Skype for Business only
Skype for Business with Teams Collaboration
Skype for Business with Teams Collaboration and Meetings
Teams only

Human Resources:

▼
Skype for Business only
Skype for Business with Teams Collaboration
Skype for Business with Teams Collaboration and Meetings
Teams only

Research:

▼
Skype for Business only
Skype for Business with Teams Collaboration
Skype for Business with Teams Collaboration and Meetings
Teams only

Reference: <https://docs.microsoft.com/en-us/microsoftteams/migration-interop-guidance-for-teams-withskype>

QUESTION 8

You work as a Systems Administrator for your company. The company has departments named Sales, Accounts, Research and Production.

The company has recently purchased a subscription to Microsoft 365.

All users in your company have a Microsoft 365 E3 license.

You are in the process of configuring Microsoft Teams. You plan to create a team for each of the company departments.

All users have the Microsoft Teams desktop client installed.

You need to ensure that the Research team is labelled as Confidential when viewed in the Microsoft Teams client.

Which of the following actions should you perform?

- A. Configure and publish a Sensitivity Label in the Security and Compliance admin center.
- B. Configure and publish a Retention Label in the Security and Compliance admin center.
- C. Configure a Teams policy in the Microsoft Teams admin center.
- D. Configure the Meeting Settings in the Microsoft Teams admin center.

Correct Answer: A

QUESTION 9

HOTSPOT

You have a Microsoft 365 subscription that contains the users shown in the following table.

Name	Role
User1	Teams Administrator
User2	Teams Communications Administrator
User3	None

In Microsoft Teams, User3 creates a new team named Team1.

User1 configures the Groups Expiration settings as shown in the following exhibit.

* Group lifetime (in days) ⓘ ▼

* Email contact for groups with no owners ⓘ ✓

Enable expiration for these Office 365 groups ⓘ

+ Add Refresh | Columns

Name	Membership Type
<input type="checkbox"/> T Team1	Assigned

For each of the following statements, select Yes if the statement is true. Otherwise, select No.

NOTE: Each correct selection is worth one point.

Hot Area:

Statements	Yes	No
User1 will receive a renewal notification 180 days before Team1 is due to expire.	<input type="radio"/>	<input type="radio"/>
User2 can renew Team1 before the team expires.	<input type="radio"/>	<input type="radio"/>
User3 will receive a renewal notification 30 days before Team1 is due to expire.	<input type="radio"/>	<input type="radio"/>

Correct Answer:

Statements	Yes	No
User1 will receive a renewal notification 180 days before Team1 is due to expire.	<input type="radio"/>	<input checked="" type="radio"/>
User2 can renew Team1 before the team expires.	<input type="radio"/>	<input checked="" type="radio"/>
User3 will receive a renewal notification 30 days before Team1 is due to expire.	<input checked="" type="radio"/>	<input type="radio"/>

Reference: <https://docs.microsoft.com/en-us/microsoftteams/team-expiration-renewal> <https://docs.microsoft.com/en-us/microsoft-365/solutions/microsoft-365-groups-expiration-policy?view=o365-worldwide-skype>

QUESTION 10

You have a Microsoft 365 E5 subscription that uses Teams.

You need to integrate Microsoft 365 Defender with Teams to prevent users from uploading malicious files to a Teams channel.

What should you do first?

- A. Turn on the Built-in protection (Microsoft) Safe Links policy.
- B. From Safe Links, edit the Global settings.
- C. From Safe Attachments, edit the Global settings.
- D. Create a Sate Attachments policy.

Correct Answer: C

QUESTION 11

Your company has a Microsoft 365 subscription.

You need to ensure that only the members of the company's IT group can create private channels.

Which three actions should you perform? Each correct answer presents part of the solution.

NOTE: Each correct selection is worth one point.

- A. Modify the global teams policy.
- B. Assign the members of the IT group to the policy.
- C. Create a custom teams policy.
- D. Run the Set-TeamsChannel cmdlet.
- E. Modify the global messaging policy.
- F. Create a custom messaging policy.

Correct Answer: ABC

Reference: <https://docs.microsoft.com/en-us/microsoftteams/teams-policies>

QUESTION 12

SIMULATION Please wait while the virtual machine loads. Once loaded, you may proceed to the lab section. This may take a few minutes, and the wait time will not be deducted from your overall test time. When the Next button is available, click it to access the lab section. In this section, you will perform a set of tasks in a live environment. While most functionality will be available to you as it would be in a live environment, some functionality

(e.g. copy and paste, ability to navigate to external websites) will not be possible by design.

Scoring is based on the outcome of performing the tasks stated in the lab. In other words, it doesn't matter how you accomplish the task, if you successfully perform it, you will earn credit for that task.

Labs are not timed separately, and this exam may have more than one lab that you must complete. You can use as much time as you would like to complete each lab. But you should manage your time appropriately to ensure that you are

able to complete the lab(s) and all other sections of the exam in the time provided.

Please note that once you submit your work by clicking the Next button within a lab, you will NOT be able to return to the lab.

You may now click next to proceed to the lab.

Username and password.

Use the following login credentials as needed:

To enter your username, place your cursor in the Sign in box and click on the username below.

To enter your password, place your cursor in the Enter password box and click on the password below.

Microsoft 365 Username:

admin@XXXXXXXXXXXX.onmicrosoft.com

Microsoft 365 Password: XXXXXXXXXXXXX

If the Microsoft 365 portal does not load successfully in the browser, press CTRL-K to reload the portal in a new browser tab.

The following information is for technical support purposes only:

Lab Instance: 26178313

Task 7

You need to acquire a dedicated Microsoft dial-in bridge number from either 431 or 343 area codes in Canada.

To complete this task, sign in to the Microsoft 365 portal.

Correct Answer: Check the answer in explanation.

Change the settings for an Audio Conferencing bridge using the Microsoft Teams admin center

When you are setting up Audio Conferencing in Microsoft 365 or Office 365, you will receive phone numbers for your users from what is called an audio conferencing bridge. A conferencing bridge can contain one or more phone numbers.

These phone numbers are used when callers dial in to a meeting. The phone number is included at the bottom of the Teams meeting invite.

Step 1: In the Microsoft Teams admin center, in the left navigation, go to Meetings > Conference bridges.

Step 2: At the top of the Conference bridges page, click Bridge settings.

Step 3: In the Bridge settings pane, select Names or phone numbers. When users dial in to a meeting, their phone number will be played when they join it.

Step 4: Select Country Canada.

Step 4: Select either the 431 or 343 area code.

Step 5: Click Save.

Reference: <https://learn.microsoft.com/en-us/microsoftteams/change-the-settings-for-an-audio-conferencing-bridge>

QUESTION 13

Your company has a Microsoft 365 subscription that uses an Azure Active Directory (Azure AD) tenant named

contoso.com.

You need to prevent guest users in the tenant from using cameras during Microsoft Teams meetings.

Solution: From the Azure Active Directory admin center, you modify the External collaboration settings.

Does this meet the goal?

A. Yes

B. No

Correct Answer: B

<https://docs.microsoft.com/en-us/microsoftteams/manage-guests>

QUESTION 14

HOTSPOT

You have a Microsoft 365 subscription that uses Teams.

You need to implement a compliance solution that meets the following requirements:

Applies a watermark to the video feed of every user

Enables end-to-end encryption for meetings

Which add-on license should you assign to the users, and which Teams feature will be disabled when using the solution? To answer, select the appropriate options in the answer area. NOTE: Each correct selection is worth one point.

Hot Area:

Add-on license:

Microsoft Teams Premium	▼
Audio Conferencing	
Communications Credits	
Microsoft Teams Premium	
Priva Privacy Risk Management	

Feature:

Meeting recording	▼
Chat during meetings	
Meeting recording	
Screen sharing	
Sharing content during meetings	

Correct Answer:

Add-on license:

Microsoft Teams Premium	▼
Audio Conferencing	
Communications Credits	
Microsoft Teams Premium	
Private Privacy Risk Management	

Feature:

Meeting recording	▼
Chat during meetings	
Meeting recording	
Screen sharing	
Sharing content during meetings	

QUESTION 15

You work as a Systems Administrator for your company. The company has a subscription to Microsoft 365. All users in your company have a Microsoft 365 E3 license.

All users use Microsoft Teams for collaboration.

A company security policy has the following requirements:

1.

All users except Team owners must be prevented from deleting sent messages

2.

Team owners must be able to delete sent messages

3.

All users must be prevented from editing sent messages

You need to configure Microsoft Teams to meet the security requirements. The solution must minimize the number of policies configured.

What should you configure?

- A. The default Messaging policy only
- B. The default Messaging policy and one additional Messaging policy.
- C. The default Messaging policy and two additional Messaging policies.

D. The default Messaging policy and the default Meeting policy.

Correct Answer: A

[Latest MS-700 Dumps](#)

[MS-700 VCE Dumps](#)

[MS-700 Exam Questions](#)