



MD-100^{Q&As}

Windows 10

Pass Microsoft MD-100 Exam with 100% Guarantee

Free Download Real Questions & Answers **PDF** and **VCE** file from:

<https://www.lead4pass.com/md-100.html>

100% Passing Guarantee
100% Money Back Assurance

Following Questions and Answers are all new published by Microsoft
Official Exam Center

-  **Instant Download** After Purchase
-  **100% Money Back** Guarantee
-  **365 Days** Free Update
-  **800,000+** Satisfied Customers





QUESTION 1

Note: This question is part of a series of questions that present the same scenario. Each question in the series contains a unique solution that might meet the stated goals. Some question sets might have more than one correct solution, while

others might not have a correct solution.

After you answer a question in this section, you will NOT be able to return to it. As a result, these questions will not appear in the review screen.

You have two computers named Computer1 and Computer2 that run Windows 10.

You have an Azure Active Directory (Azure AD) user account named admin@contoso.com that is in the local Administrators group on each computer.

You sign in to Computer1 by using admin@contoso.com.

You need to ensure that you can use Event Viewer on Computer1 to connect to the event logs on Computer2.

Solution: On Computer2, you run the Enable-PSRemoting cmdlet.

Does this meet the goal?

- A. Yes
- B. No

Correct Answer: A

The Enable-PSRemoting cmdlet configures the computer to receive PowerShell remote commands that are sent by using the WS-Management technology.

References: <https://docs.microsoft.com/en-us/powershell/module/microsoft.powershell.core/enable-psremoting?view=powershell-7>

QUESTION 2

You have a Microsoft 365 Enterprise E3 license.

You have a computer named Computer1 that runs Windows 10.

You need to ensure that you can access the files on Computer1 by using a web browser on another computer. What should you configure?

- A. Sync your settings in the Settings app
- B. the File Explorer desktop app
- C. the Microsoft OneDrive desktop app
- D. Default apps in the Settings app



Correct Answer: C

QUESTION 3

Your network contains an Active Directory domain that is synced to a Microsoft Azure Active Directory (Azure AD) tenant.

The company plans to purchase computers preinstalled with Windows 10 Pro for all users.

The company the following requirements:

1.
The new computers must be upgraded to Windows 10 Enterprise automatically.
2.
The new computers must be joined to Azure AD automatically when the user starts the new computers for the first time.
3.
The users must not be required to accept the End User License Agreement (EULA).
4.
You need to deploy the new computers. What should you do?
 - A. Make use of the wipe and load refresh deployment method.
 - B. Perform in-place upgrade on the new computers.
 - C. Provide provisioning packages for the new computers.
 - D. Make use of Windows Autopilot.

Correct Answer: D

Windows Autopilot is a collection of technologies used to set up and pre-configure new devices, getting them ready for productive use. You can also use Windows Autopilot to reset, repurpose and recover devices.

The OEM Windows 10 installation on the new computers can be transformed into a "business-ready" state, applying settings and policies, installing apps, and even changing the edition of Windows 10 being used (e.g. from Windows 10 Pro to

Windows 10 Enterprise) to support advanced features.

The only interaction required from the end user is to connect to a network and to verify their credentials. Everything beyond that is automated.

Reference:

<https://docs.microsoft.com/en-us/windows/deployment/windows-autopilot/windows-autopilot>



QUESTION 4

Use the drop-down menus to select the answer choice that completes each statement based on the information presented in the graphic.

NOTE: Each correct selection is worth one point.

Hot Area:

Answer Area

[Answer choice] applied to User1

	▼
One local GPO is	
One domain GPO and one local GPO are	
Two local GPOs are	
Two domain GPOs are	

To configure GPO settings that affect only User1, you must first [answer choice]

	▼
open the Local Group Policy Editor console	
open the Group Policy Management console	
add the Group Policy Object Editor snap-in to a console	

Correct Answer:

Answer Area

[Answer choice] applied to User1

	▼
One local GPO is	
One domain GPO and one local GPO are	
Two local GPOs are	
Two domain GPOs are	

To configure GPO settings that affect only User1, you must first [answer choice]

	▼
open the Local Group Policy Editor console	
open the Group Policy Management console	
add the Group Policy Object Editor snap-in to a console	

References: <https://www.windowcentral.com/how-apply-local-group-policy-settings-specific-users-windows-10>

QUESTION 5

HOTSPOT



You have two computers named Computer1 and Computer2 that run Windows 10. The computers are in a workgroup.

You perform the following configurations on Computer1:

1.
Create a user named User1.

2.
Add User1 to the Remote Desktop Users group.

You perform the following configurations on Computer2:

1.
Create a user named User1 and specify the same user password as the one set on Computer1.

2.
Create a share named Share2 and grant User1 Full control access to Share2.

3.
Enable Remote Desktop.

What are the effects of the configurations? To answer, select the appropriate options in the answer area.

NOTE: Each correct selection is worth one point.

Hot Area:

Answer Area

If User1 attempts to access Share2 from Computer1, the user will:

<input type="checkbox"/>	Access Share2 without a prompt
<input type="checkbox"/>	Be prompted for credentials
<input type="checkbox"/>	Be denied access to Share2

If User1 attempts to sign in to Remote Desktop on Computer2 from Computer1, the user will:

<input type="checkbox"/>	Sign in to Remote Desktop without a prompt
<input type="checkbox"/>	Be prompted for credentials and be able to sign in as User1.
<input type="checkbox"/>	Be prompted for credentials and be prevented from signing in as User1.

Correct Answer:



Answer Area

If User1 attempts to access Share2 from Computer1, the user will:

▼
Access Share2 without a prompt
Be prompted for credentials
Be denied access to Share2

If User1 attempts to sign in to Remote Desktop on Computer2 from Computer1, the user will:

▼
Sign in to Remote Desktop without a prompt
Be prompted for credentials and be able to sign in as User1.
Be prompted for credentials and be prevented from signing in as User1.

QUESTION 6

You have a computer named Computer1 that runs Windows 10. Computer1 connects to multiple wireless networks.

You need to view the wireless networks to which Computer1 connects.

What should you use?

- A. the System log in Event Viewer
- B. Wi-Fi in the Settings app
- C. the properties of the wireless adapter in Network Connections in Control Panel
- D. the Details tab for the wireless adapter in Device Manager

Correct Answer: B

Reference: <https://www.windowscentral.com/how-connect-wi-fi-network-windows-10>

QUESTION 7

You are a network administrator at your company.

The company uses an application that checks for network connectivity to a server by sending a ping request to the IPv6 address of the server replies, the application loads.

A user cannot open the application.

You manually send the ping request from the computer of the user and the server does not reply. You send the ping request from your computer and the server replies. You need to ensure that the ping request works from the user's computer.

Which Windows Defender firewall rule is a possible cause of the issue?

- A. File and Printer Sharing (NB-Datagram-In)



- B. File and Printer Sharing (Echo request ICMPv6-Out)
- C. File and Printer Sharing (NB-Datagram-Out)
- D. File and Printer Sharing (Echo Request ICMPv6-In)

Correct Answer: B

QUESTION 8

Note: This question is part of a series of questions that present the same scenario. Each question in the series contains a unique solution that might meet the stated goals. Some question sets might have more than one correct solution, while

others might not have a correct solution.

After you answer a question in this section, you will NOT be able to return to it. As a result, these questions will not appear in the review screen.

Your network contains an Active Directory domain. The domain contains a computer named Computer1 that runs Windows 8.1.

Computer1 has apps that are compatible with Windows 10.

You need to perform a Windows 10 in-place upgrade on Computer1.

Solution: You copy the Windows 10 installation media to a Microsoft Deployment Toolkit (MDT) deployment share. You create a task sequence, and then you run the MDT deployment wizard on Computer1.

Does this meet the goal?

- A. Yes
- B. No

Correct Answer: A

Reference: <https://docs.microsoft.com/en-us/windows/deployment/deploy-windows-mdt/upgrade-to-windows-10-with-the-microsoft-deployment-toolkit>

QUESTION 9

You need to ensure that Client3 starts in safe mode automatically the next time the computer restarts. After completing the task, you must NOT restart Client3.

To complete this task, sign in to the required computer or computers.

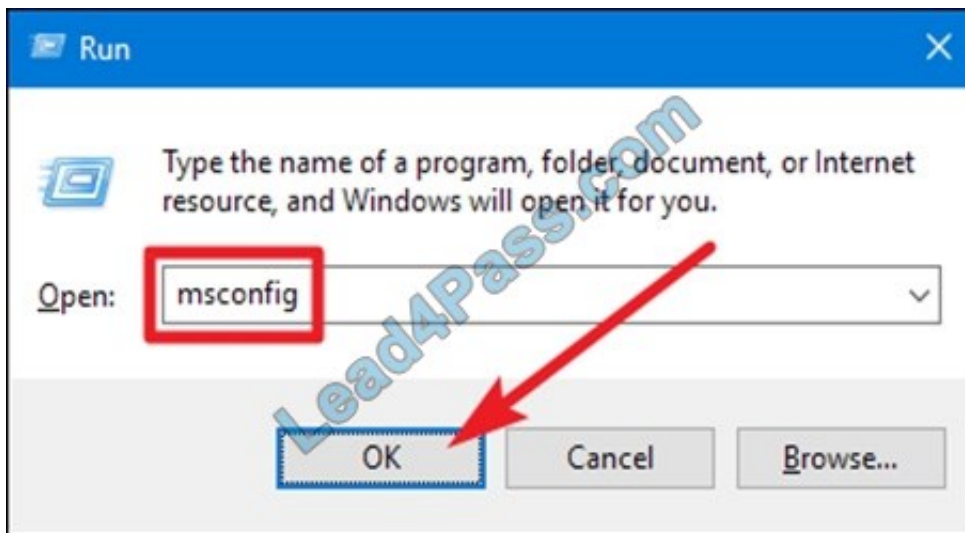
Correct Answer: See below.

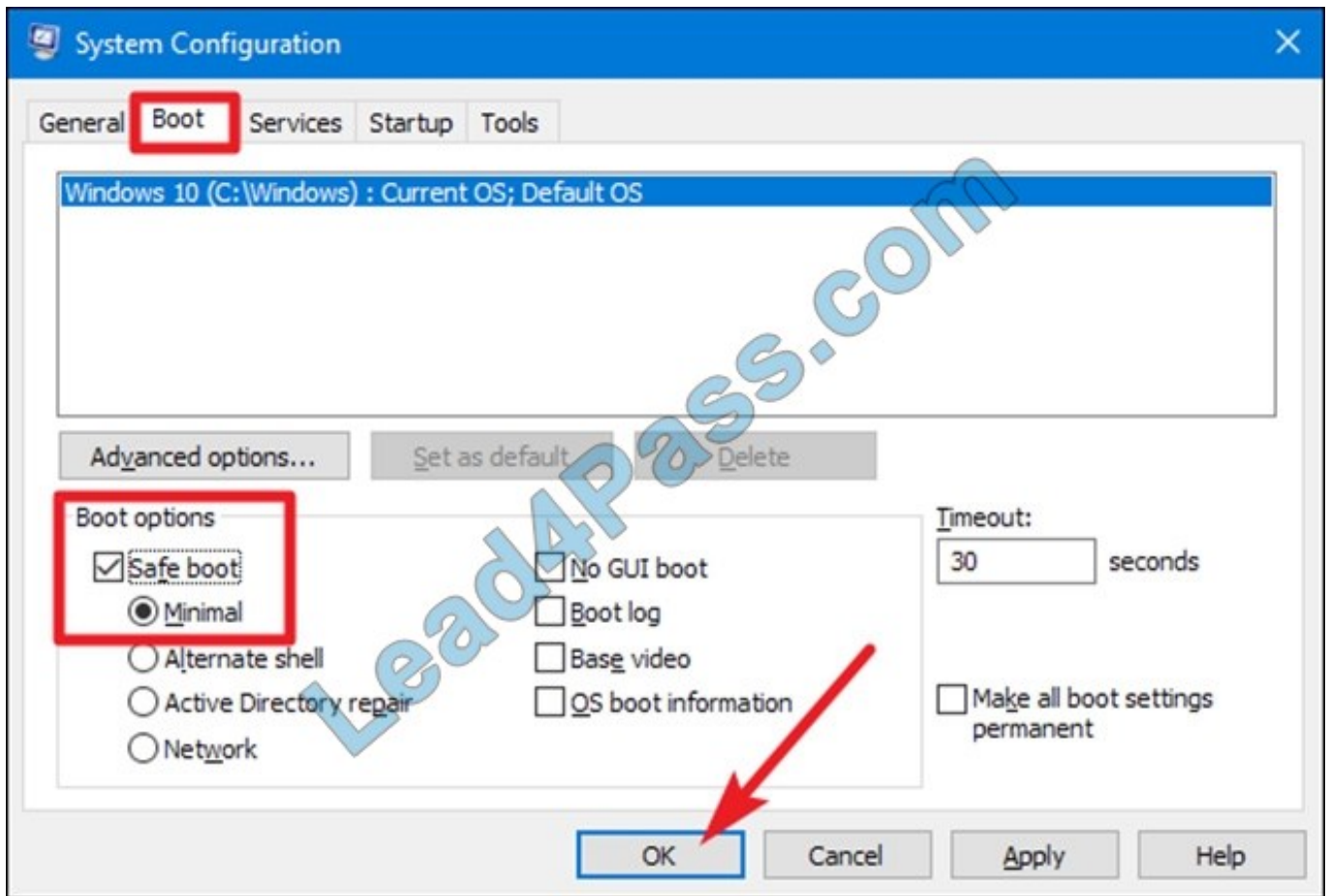
1.

From Client3, open the System Configuration utility by pressing the Windows and R keys simultaneously to display the Run box .



2.
Type "msconfig" into the box, and then click OK.
3.
In the "System Configuration" window, switch to the "Boot" tab.
4.
Enable the "Safe Boot" check box, and then make sure the "Minimal" option below that is selected. Click the "OK" button when you're done.
5.
You will be prompted to Restart or Exit without restart. Click Exit without restart.





Reference: <https://www.howtogeek.com/howto/windows-vista/force-windows-to-boot-into-safe-mode-without-using-the-f8-key/>

QUESTION 10

HOTSPOT

Your network contains an Active Directory domain that contains the objects shown in the following table.



Name	Type	Member of
User1	User	Group1
User2	User	Group2
Group1	Global group	None
Group2	Domain local group	None
Computer1	Computer	Group1
Computer2	Computer	Group1

Computer1 contains the shared folders shown in the following table.

Name	NTFS permission	Share permission	Folder enumeration mode
Share1	Group1:Write	Group1: Full control	Access-based
Share2\$	Group2: Full control	Group2: Read	Unrestricted

The computers have the network configurations shown in the following table.

Name	Network Discovery	Windows Defender Firewall
Computer1	On	Incoming connections: Block all connections to apps that are not on the list of allowed apps
Computer2	Off	Incoming connections: Block all connections to apps that are not on the list of allowed apps

Computer1 contains the shared folders shown in the following table.

Name	NTFS permission	Share permission	Folder enumeration mode
Share1	Group1:Write	Group1: Full control	Access-based
Share2\$	Group2: Full control	Group2: Read	Unrestricted

The computers have the network configurations shown in the following table.

For each of the following statements, select Yes if the statement is true. Otherwise, select No. NOTE: Each correct selection is worth one point.

Hot Area:



Answer Area

Statements	Yes	No
Share1 is listed if User1 connects to \\Computer1 from Computer2.	<input type="radio"/>	<input type="radio"/>
Share1 is listed if User2 connects to \\Computer1 from Computer2.	<input type="radio"/>	<input type="radio"/>
Share2\$ is listed if User2 connects to \\Computer1 from Computer2.	<input type="radio"/>	<input type="radio"/>

Correct Answer:

Answer Area

Statements	Yes	No
Share1 is listed if User1 connects to \\Computer1 from Computer2.	<input checked="" type="radio"/>	<input type="radio"/>
Share1 is listed if User2 connects to \\Computer1 from Computer2.	<input type="radio"/>	<input checked="" type="radio"/>
Share2\$ is listed if User2 connects to \\Computer1 from Computer2.	<input type="radio"/>	<input checked="" type="radio"/>

Box 1: Yes

User1 is in Group1 which has permission to access the share so the share will be visible.

Box 2: No

User2 is in Group2 which does not have permission to access Share1. Access-based enumeration is enabled so Share1 will not be listed as User2 does not have permission to access it.

Box 3: No

Share2\$ is a hidden share (dollar sign appended) so the share will never be listed.

QUESTION 11

Note: This question is part of a series of questions that present the same scenario. Each question in the series contains a unique solution that might meet the stated goals. Some question sets might have more than one correct solution, while

others might not have a correct solution.

After you answer a question in this section, you will NOT be able to return to it. As a result, these questions will not appear in the review screen.



You have a laptop named Computer1 that runs Windows 10.

When in range, Computer1 connects automatically to a Wi-Fi network named Wireless1. You need to prevent Computer1 from automatically connecting to Wireless1.

Solution: From the Services console, you disable the Link-Layer Topology Discovery Mapper service.

Does this meet the goal?

A. Yes

B. No

Correct Answer: B

QUESTION 12

HOTSPOT

You need to reduce the amount of time it takes to restart Application1 when the application crashes.

What should you include in the solution? To answer, select the appropriate options in the answer area.

NOTE: Each correct selection is worth one point.

Hot Area:

Answer Area

Tool to use:

	▼
Event Viewer	
Performance Monitor	
Windows Memory Diagnostic	
Windows Performance Analyzer	

Task to perform:

	▼
Create a subscription	
Attach a task to an event	
Enable an event trace provider	
Create an alert	

Correct Answer:



Answer Area

Tool to use:

	▼
Event Viewer	
Performance Monitor	
Windows Memory Diagnostic	
Windows Performance Analyzer	

Task to perform:

	▼
Create a subscription	
Attach a task to an event	
Enable an event trace provider	
Create an alert	

Reference: <https://www.howto-connect.com/how-to-attach-a-task-to-this-event-in-event-viewer-in-windows-10/>

QUESTION 13

Note: This question is part of a series of questions that present the same scenario. Each question in the series contains a unique solution that might meet the stated goals. Some question sets might have more than one correct solution, while

others might not have a correct solution.

After you answer a question in this section, you will NOT be able to return to it. As a result, these questions will not appear in the review screen.

You have a computer named Computer1 that runs Windows 10. The computer contains a folder. The folder contains sensitive data.

You need to log which user reads the contents of the folder and modifies and deletes files in the folder.

Solution: From the properties of the folder, you configure the Auditing settings and from the Audit Policy in the local Group Policy, you configure Audit directory service access.

Does this meet the goal?

A. Yes

B. No

Correct Answer: B



VCE & PDF

Lead4Pass.com

<https://www.lead4pass.com/md-100.html>

2022 Latest lead4pass MD-100 PDF and VCE dumps Download

https://www.netwrix.com/how_to_detect_who_changed_file_or_folder_owner.html

[MD-100 VCE Dumps](#)

[MD-100 Study Guide](#)

[MD-100 Exam Questions](#)



To Read the [Whole Q&As](#), please purchase the [Complete Version](#) from [Our website](#).

Try our product !

100% Guaranteed Success
100% Money Back Guarantee
365 Days Free Update
Instant Download After Purchase
24x7 Customer Support
Average 99.9% Success Rate
More than 800,000 Satisfied Customers Worldwide
Multi-Platform capabilities - [Windows](#), [Mac](#), [Android](#), [iPhone](#), [iPod](#), [iPad](#), [Kindle](#)

We provide exam PDF and VCE of Cisco, Microsoft, IBM, CompTIA, Oracle and other IT Certifications.
You can view Vendor list of All Certification Exams offered:

<https://www.lead4pass.com/allproducts>

Need Help

Please provide as much detail as possible so we can best assist you.
To update a previously submitted ticket:



 <p>One Year Free Update Free update is available within One Year after your purchase. After One Year, you will get 50% discounts for updating. And we are proud to boast a 24/7 efficient Customer Support system via Email.</p>	 <p>Money Back Guarantee To ensure that you are spending on quality products, we provide 100% money back guarantee for 30 days from the date of purchase.</p>	 <p>Security & Privacy We respect customer privacy. We use McAfee's security service to provide you with utmost security for your personal information & peace of mind.</p>
---	---	--

Any charges made through this site will appear as Global Simulators Limited.
All trademarks are the property of their respective owners.
Copyright © lead4pass, All Rights Reserved.